

# SUSIE PRYOR



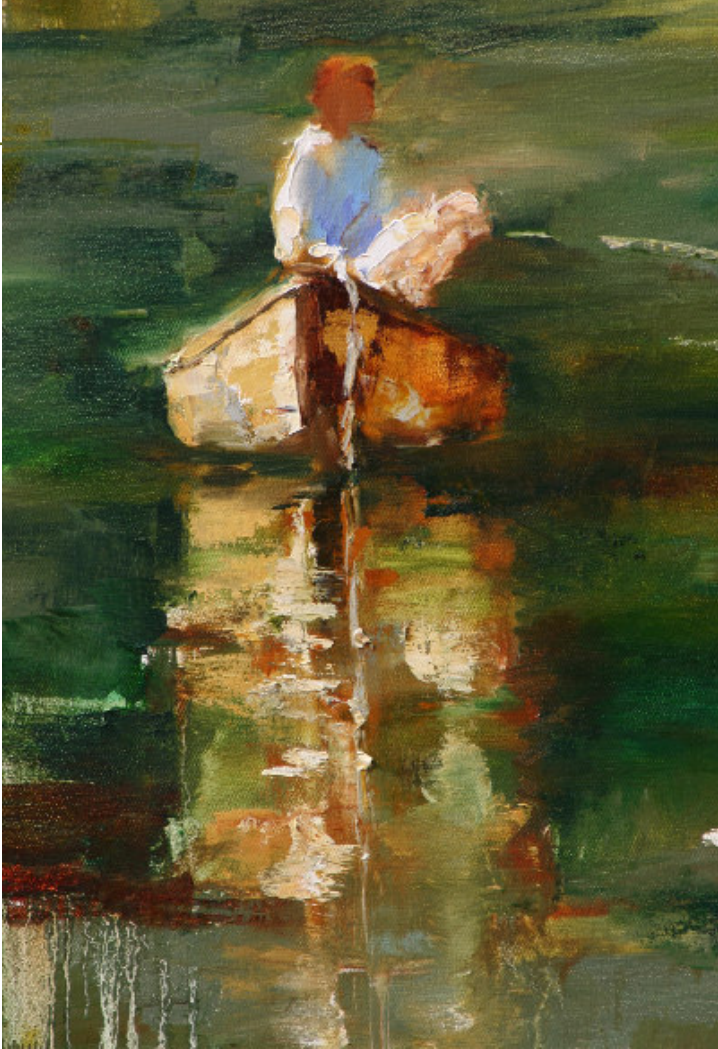
Roses, Oil on Canvas, 24x30

Atlanta-based artist, Susie Pryor, has been noted by many for her exceptional command of light and shadow and her multi-layered palette knife work. In her most recent paintings, Pryor employs a few new techniques to add intrigue to her already beloved compositions. By blocking larger shapes and combining them to make cohesive forms, Pryor strays from her well-known style, consisting of numerous strokes of the palette knife. Pryor also experiments with several glazes, or thin layers of paint, allowing the viewer to penetrate the surface of the canvas, revealing layers of color. Pryor's paintings attest to the influence of several renowned artists and their signature styles.

Alluding to such elements as Andrew Wyeth's simplicity of shape and tonal palette, and to Mary Cassatt's tender treatment of children, Pryor refers to the past, while simultaneously capturing the feeling of the present moment.

The artist states, "My objection is to give life and emotion to subject matter that is visually gripping and exciting. Each painting involves a thought-provoking struggle between abstraction and reality. As with life...simplification enhances the view."

*Susie Pryor's work can be viewed at Bennett Street Gallery in Atlanta, GA.*



*Fisher with Dog (detail)*, Oil on Canvas, 40x48



*Bird Feeder*, Oil on Canvas, 30x40

*Bird Feeder*, Oil on Canvas, 48x60

